

Quality
Sustainable
Food
Packaging



J.J. Marshall Inc.



Catalog 2024

Our History!



J.J. Marshall was founded on January 10th, 1933 by Mr. John Joseph Marshall. Mr. Marshall worked out of his garage on St-Dominique street in Montreal producing paper muffin molds.

In the 1960 his land was expropriated to make way for the Montreal Metro system, Mr. Marshall moved his business to the building on Waverly Street where it remain to this day. Over time J.J. Marshall added die-cutting, glueing and printing to its production facility.

Mr. Marshall owned the company until his passing in 1970, at which point his brother-in-law Edward Glynn took ownership. Edward's family continues own and operate it to this day.

Nowadays!

With almost a century of experience JJM continues to be a leader in the food packaging industry. Maintaining BRC certification and the highest standards of quality control is a guiding principle at JJM and why they continues to manufacture their products in Canada. With cutting edge technology for graphics and die design, printing, glueing and delivery they are able to offer a wide range of solutions to meet their clients food packaging needs.



Baking with J.J. Marshall fluted paper cups helps retain freshness and allow longer shelf life, reducing waste from product sticking to baking pans.

WHITE ROUND MUFFIN CUPS



Item #	Base	Wall	Diam.	Case	Weight
MUF-0125-300	1.125"	15/16"	3.0"	10m	6 lbs
MUF-0830-05M	1.5"	1"	3.5"	5m	4 lbs
MUF-0830-10M	1.5"	1"	3.5"	10m	8 lbs
MUF-1030-05M	1.875"	1.125"	4"	5m	5 lbs
MUF-1030-10M	1.875"	1.125"	4"	10m	10 lbs
MUF-1530-05M	1.875"	1.375"	4.5"	5m	6 lbs
MUF-1530-10M	1.875"	1.375"	4.5"	10m	12 lbs
MUF-1530-25M	1.875"	1.375"	4.5"	25m	29 lbs
MUF-V200-500	2"	1.5"	5"	5m	7 lbs
MUF-X200-500	2"	1.5"	5"	10m	14 lbs
MUF-V200-550	2"	1.75"	5.5"	5m	8 lbs
MUF-X200-550	2"	1.75"	5.5"	10m	16 lbs
MUF-X250-550	2.5"	1.5"	5.5"	10m	17 lbs
MUF-2030-05M	2.25"	1.125"	4.5"	5m	6 lbs
MUF-2030-10M	2.25"	1.125"	4.5"	10m	13 lbs
MUF-0300-550	3"	1.25"	5.5"	10m	17 lbs
MUF-0300-600	3"	1.5"	6"	10m	20 lbs
MUF-0350-600	3.5"	1.25"	6"	10m	22 lbs
MUF-0350-625	3.5"	1.375"	6.25"	5m	13 lbs
MUF-0350-650	3.5"	1.5"	6.5"	10m	25 lbs

Stock material: White waxed paper.

Custom order: Red, yellow, brown or pink glassine paper.

Silicone (parchment) and greaseproof paper.

Packaged in cardboard tubes to prevent warping.

WHITE SQUARE MUFFIN CUPS



Item #	Base	Wall	Diam.	Case	Weight
MUF-STSQ-05M	2" x 2"	1.1875"	4.375"	5m	7 lbs
MUF-STSQ-10M	2" x 2"	1.1875"	4.375"	10m	14 lbs

Stock material: White wax paper.

Custom order: Red, yellow, brown or pink glassine paper.

Silicone (parchment) and greaseproof paper.

Customized logos and designs.

Packaged in cardboard tubes to prevent warping.

WHITE ECLAIR MOULDS



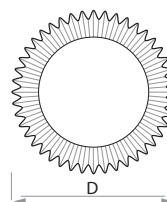
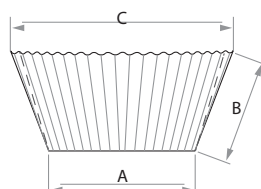
Item #	Base	Wall	Case	Weight
ECL-05.5-10M	5.25" x 1.25"	1"	10m	16 lbs
ECL-0500-10M	5" x 1.25"	1"	10m	16 lbs

Stock material: White waxed paper.

Custom order: custom logos and designs.

Packaged in cardboard tubes to prevent warping.

How to measure baking pans.



A = Base

B = Wall

D = Flat diameter

(D = A + B + B)

ROUND COLOURED MUFFIN CUPS



Item #	Base	Wall	Diam.	Case	Weight
GLA-0125-300	1.125"	.9375"	3"	5M	5 lbs
GLA-0125-RED	1.125"	.9375"	3"	5M	5 lbs
GLA-0125-YEL	1.125"	.9375"	3"	5M	5 lbs
GLA-0125-CHO	1.125"	.9375"	3"	5M	5 lbs
GLA-0125-PIN	1.125"	.9375"	3"	5M	5 lbs
GLA-0830-RED	1.5"	1"	3.5"	5M	6 lbs
GLA-0830-YEL	1.5"	1"	3.5"	5M	6 lbs
GLA-0830-CHO	1.5"	1"	3.5"	5M	6 lbs
GLA-0830-PIN	1.5"	1"	3.5"	5M	6 lbs
GLA-1530-RED	1 7/8"	1.375"	4.5"	5M	6 lbs
GLA-1530-YEL	1 7/8"	1.375"	4.5"	5M	6 lbs
GLA-1530-CHO	1 7/8"	1.375"	4.5"	5M	6 lbs
GLA-1530-PIN	1 7/8"	1.375"	4.5"	5M	6 lbs

Material: white, red, yellow, brown or pink glassine paper.
On request: silicone (parchment) or greaseproof paper.
 Packaged in cardboard tubes to prevent warping.



Fluted cups make baking and preserving products easier, with the advantage of less cleaning and less waste during baking.

With their classic green and red motifs, our holiday collection is as perfect for adding a festive touch to your classic products or for use with your seasonal products.

ROUND HOLIDAY MUFFIN CUPS



Item #	Base	Wall	Diam.	Case	Weight
MUF-0830-XMS	1.5"	1"	3.5"	5M	5 lbs
MUF-1030-XMS	1.875"	1.125"	4"	5M	6 lbs
MUF-1530-XMS	1.875"	1.375"	4.5"	5M	6 lbs
MUF-2030-XMS	2.25"	1.125"	4"	5M	7 lbs

Material: 2 colors print (red & green) on white wax paper.
Packed in cardboard tubes to prevent warping.

HOLIDAY SQUARE MUFFIN CUPS



Item #	Base	Wall	Diam.	Case	Weight
MUF-STSQ-XMS	2" x 2"	1.1875"	4.375"	5M	7 lbs

Material: 2 colors print (red & green) on white wax paper.
Packed in cardboard tubes to prevent warping.

HOLIDAY CAKE BAKING MOULDS



Item #	Dimension	Wall	Case	Weight
LIN-XMAS-006	6.875" x 2.875"	2.25"	5M	33 lbs
LIN-XMAS-20A	6.375" x 2.875"	2.25"	5M	27 lbs

Material: 2 colors print (red & green) on white wax paper.
Packed in cardboard tubes to prevent warping.

HOLIDAY ECLAIRS MOULDS



Item #	Base	Wall	Case	Weight
ECL-04.5-XMS	4.5" x 1"	1"	5M	7 lbs
ECL-05.5-XMS	5.5" x 1"	1"	5M	8 lbs

Material: 2 colors print (red & green) on white wax paper.
Packaged in cardboard tubes to prevent warping.

VINTAGE ROUND PASTRY MOULDS



Item #	Description	Base	Wall	Case	Weight
DES-OC-1-05M	C-1 (0830)	1.5"	1"	5M	4 lbs
DES-OC-2-05M	C-2 (1530)	1.875"	1.25"	5M	7 lbs

Material: 1 colors print (gold) on white glassine paper.
Packed in cardboard tubes to prevent warping.

VINTAGE SQUARE PASTRY MOULDS



Item #	Description	Base	Wall	Case	Weight
DES-OC-3-05M	C-3 (square)	1.75" x 1.75"	1.25"	5M	7 lbs

Material: 1 colors print (gold) on white glassine paper.
Packed in cardboard tubes to prevent warping.

VINTAGE ECLAIR MOULDS





Item #	Description	Base	Wall	Case	Weight
DES-OC-4-05M	C-4 (4.5")	3.75" X 1"	1.	5M	7 lbs
DES-OC-5-05M	C-5 (5.5")	5.25" x 1"	1"	5M	8 lbs
DES-OC-6-05M	C-6 (000)	3.25" x 2"	1.25"	5M	10 lbs

Material: 1 colors print (gold) on white glassine paper.
Packed in cardboard tubes to prevent warping.

*Our vintage pastry cups will
add style to your creations with
their gold-coloured lace print.*

ROUND SHEET FLAT LINERS

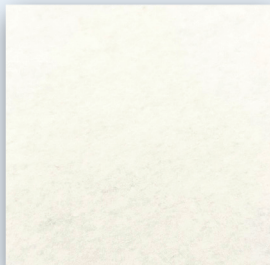





Item #	Case	Dimension
RON-FLAT-575	1M	5.75"
RON-FLAT-006	1M	6"
RON-FLAT-6.5	1M	6.5"
RON-FLAT-007	1M	7"
RON-FLAT-7.5	1M	7.5"
RON-FLAT-008	1M	8"
RON-FLAT-8.5	1M	8.5"
RON-FLAT-009	1M	9"
RON-FLAT-010	1M	10"
RON-FLAT-012	1M	12"

Material: White wax paper.
On request: Wax paper in red, yellow, chocolate brown or pink.
Silicone (parchment) and greaseproof paper.
Customized logo and design printing.
Minimum order: 5000 units.

SQUARE SHEET FLAT LINERS







Item #	Case	Dimension
SQU-FLAT-575	1M	5.75" x 5.75"
SQU-FLAT-006	1M	6" X 6"
SQU-FLAT-6.5	1M	6.5" X 6.5"
SQU-FLAT-007	1M	7" X 7"
SQU-FLAT-7.5	1M	7.5" X 7.5"
SQU-FLAT-008	1M	8" X 8"
SQU-FLAT-8.5	1M	8.5" X 8.5"
SQU-FLAT-009	1M	9" X 9"
SQU-FLAT-010	1M	10" X 10"
SQU-FLAT-012	1M	12" X 12"

Material: White wax paper.
On request: Wax paper in red, yellow, chocolate brown or pink.
Silicone (parchment) and greaseproof paper.
Customized logo and design printing.
Minimum order: 5000 units.

CUSTOMIZED CORRUGATED LINERS





Item #	Description	Base	Wall	Case	Weight
P7C-ORRU-RED	P7	12.25" X 8.25"	2.5"	500	11 lbs

Material: Single-sided laminated corrugated paper.
On request: Single-sided laminated glassine paper, greaseproof paper or wax paper cut to your specifications.
White, red, pink, yellow or chocolate brown.
Cut to your specifications.
Minimum order: 5000 units.



HAMBURGER WRAPPERS OR PAPER TRAY



Item #	Description	Wall	Case	Weight
HAM-0008-10M	3.5" X 1.75"	2.25"	10M	31 lbs
HAM-0009-10M	3.5" X 1.75"	2.75"	10M	40 lbs

Material: waxed paper.
On request: printing of logos and custom designs.
Packaged in cardboard tubes to prevent warping.

HOT DOG WRAPPERS FLUTTED BOAT



Item #	Description	Wall	Case	Weight
HOT-DOG0-10M	6" X 1.625"	1.25"	10M	22 lbs

Material: waxed paper.
On request: printing of logos and custom designs.
Packaged in cardboard tubes to prevent warping.

Our hot dog and hamburger tray are ideal for snack bars, fairs, food trucks and other outdoor events.



OBLONG FLUTED LINERS



Item #	Description	Wall	Case	Weight
LIN-OBLO-000	3.25" x 2"	1.25"	5M	9 lbs
LIN-HIGH-000	3.25" x 2"	1.75"	10M	26 lbs
LIN-4525-218	4.5" x 2.5"	2 1/8"		On request
LIN-020A-2.5	6.375" x 2.5" "	2.5"	5M	30 lbs
LIN-OBLO-20A	6.375" x 2.75"	2.25"	5M	27 lbs
LIN-OBLO-006	6.875" x 2.875"	2.25"	5M	30 lbs
LIN-OBL-49A	8.75" x 2.375"	2.25"	5M	34 lbs
LIN-OBLO-007	7.50" x 3.50"	2.50"	3M	22 lbs
LIN-BRIO-CHE	9.25" x 3.75"	2.75"		On request

Material: Wax paper.

On request: Wax paper in red, yellow, chocolate brown or pink.
Silicone (parchment) and greaseproof paper.
Customized logos and designs.

Packaged in cardboard tubes to prevent warping.

ROUND FLUTED LINERS



Item #	Base	Wall	Case	Weight
RON-4.25-1.5	4.25"	1.5"	1M	3 lbs
RON-4.75-1.5	4.75"	1.5"	1M	3.5 lbs
RON-5.25-1.5	5.25"	1.5"	1M	4.5 lbs
RON-5.75-1.5	5.75"	1.5"	1M	5 lbs
RON-6.25-1.5	6.25"	1.5"	1M	5.5 lbs
RON-6.75-1.5	6.75"	1.5"	1M	6 lbs
RON-7.75-1.5	7.75"	1.5"	1M	7 lbs
RON-8.75-1.5	8.75"	1.5"	1M	7 lbs
RON-9.75-1.5	9.75"	1.5"	1M	8 lbs

Material: Wax paper.

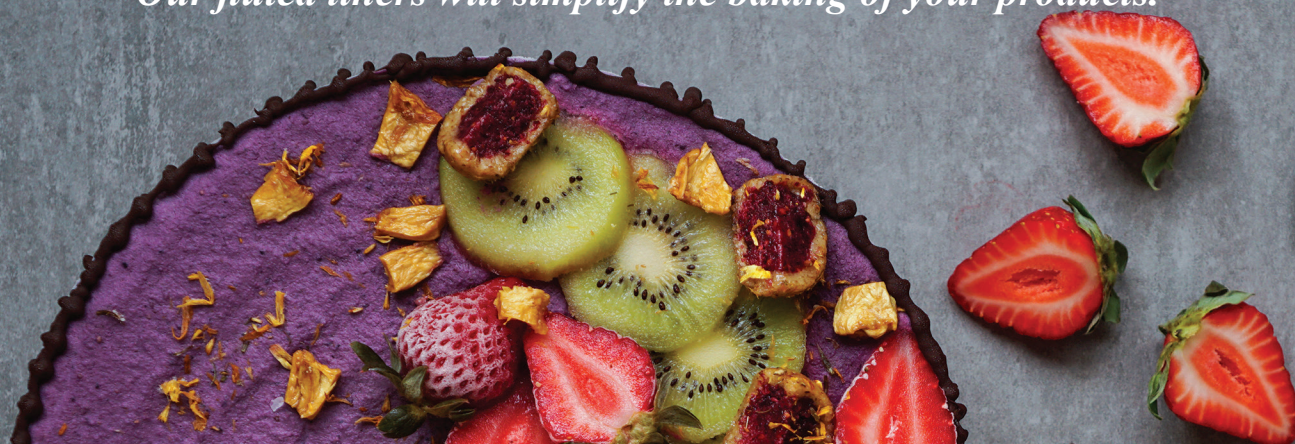
On request: Red, yellow, chocolate-brown and pink wax paper.
Silicone (parchment) and greaseproof paper.
Printing of logos and custom designs.

Walls of various heights also available.

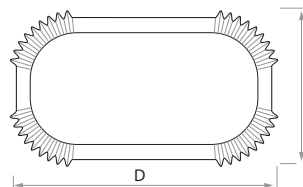
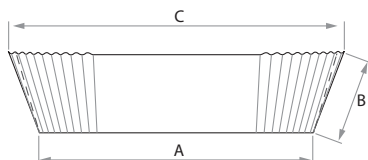
Chimney hole.

Packaged in cardboard tubes to prevent warping.

Our fluted liners will simplify the baking of your products.



How to take
measurements for
baking pans



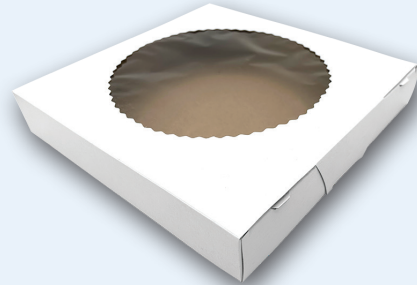
A = Bottom diameter
B = Wall height
C = Top diameter
D x E = Flat diameter

**Don't hesitate to ask for information about
adding your logo, address, website or slogan
to your baking pans.**



Our “Econo” pie boxes are ideal if you’re looking for a box at a good price.

“ECONO” PIE BOXES



Item #	Dimension	Wall	Case	Weight
PIE-8000-ECO	8"X 8"	1.5"	250	25 lbs
PIE-9000-ECO	9"X 9"	1.5"	250	34 lbs

Material: 18 pts CCNB cardboard.

“NATURAL” SHIPBOARD” PIE BOXES



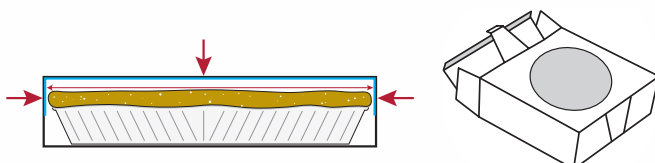
Our “Natural” pie box are a stackable and cardboard, sturdy 24 pts carton. Always in stock for quick delivery.

Item #	Dimension	Wall	Case	Weight
PIE-CHIP-8X	8"X 8"	1.5"	200	25 lbs
PIE-CHIP-9X	9"X 9"	1.5"	200	28 lbs
PIE-CHIP-10X	10"X 10"	1.75"	200	33 lbs

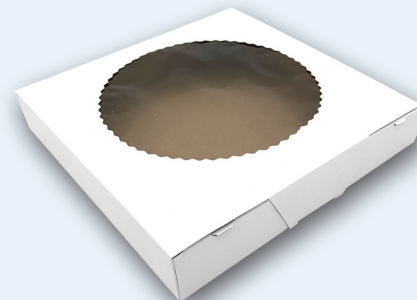
Material: Chipboard 24 pts.

Our “Presto” pie boxes are grease-proof and have vented lids to prevent steam from forming.

For your pie boxes, you can ask for extra protection against grease with a film on three sides of the box.



“PRESTO” PIE BOXES



Item #	Dimension	Wall	Case	weight
PRE-8106-PIE	8"X 8"	1.5"	250	27 lbs
PRE-9106-PIE	9"X 9"	1.5"	250	30 lbs
PRE-1006-PIE	10"X 10"	1.75"	250	40 lbs

Material: 18 pt CCNB grease proof cardboard.

Our “Presto” donut boxes are grease proof and available grease-resistant and available in several types of cardboard.

“PRESTO” DONUT BOXES

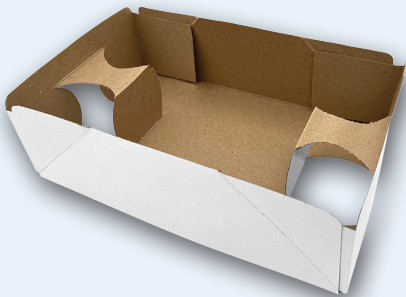


Window with cellophane

Item #	Dimension	Wall	Case	Weight
PRE-1055-BDO	10.25" X 6.75"	1.875"	250	33 lbs

Available: CCNB 18 pts grease proof cardboard
White outerboard, chipboard interior

“PRESTO” TAKEAWAY CABARETS



Item #	Dimension	Wall	Case	Weight
PRE-040B-DHM	11.25" X 7"	3.5"	250	30 lbs

Material: 18 pts CCNB cardboard.
On request: : Custom sizes available.
White outer board, chipboard interior

Our the “Presto” grease proof trays are perfect for carrying meals and soft drinks, together.

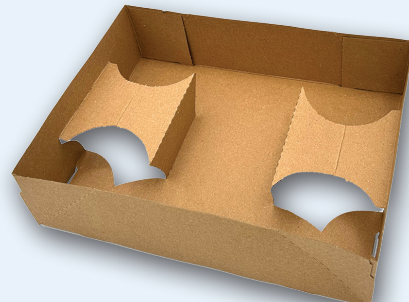
“PRESTO” HOT DOG CONTAINERS



Item #	Dimension	Wall	Case	Weight
HOT-DOGH-OLD	5" x 1.375"	1.375"	4M	55 lbs

Material: 18 pts CCNB cardboard.
White outer board, chipboard interior

“PRESTO” TAKEAWAY CABARETS

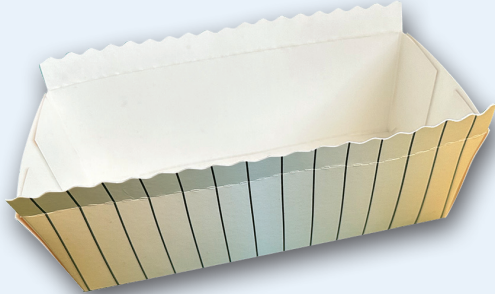


Item #	Dimension	Wall	Case	Weight
PRE-0044-TAK	9.25" X 7.25"	2.25"	500	43 lbs

Material: Chipboard 18-pts.
Custom-made cabarets available on request.

Our line of bake and serve trays is glued and formed for easy baking. All our trays are made of quality cardboard, laminated with a non-stick paper coating, making them suitable for oven and microwave use.

"DISTINCTION" BAKE AND SERVE TRAY

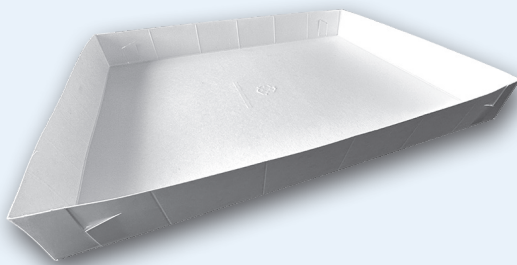


Item #	Dimension	Wall	Case	Weight
DIS-0063-B&S	6.75" x 3"	2.25"	250	11 lbs
INS-8306-CAK	8 X 8	3.5"	250	38 lbs
DIS-1061-B&S	10" x 6"	1"	450	24 lbs
DIS-0117-B&S	11" x 7"	1.25"	350	24 lbs

Material: EP Coat 18 pts cardboard.

Our "bake and serve" trays have guide lines and four hooked corners for disassembly and cutting, making it easy to divide portions. Suitable for conventional and microwave ovens. Metal detector-friendly, biodegradable and recyclable, they are always in stock for quick delivery.

BAKE AND SERVE PAN

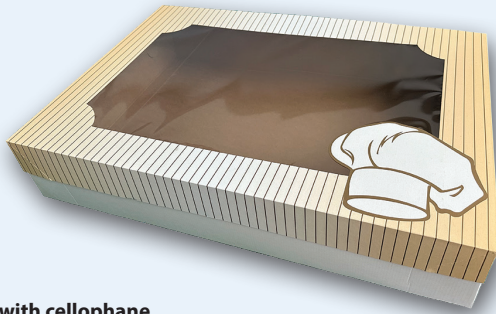


Item #	Dimension	Wall	Case	Weight
1/4-SLAB-B&S	7.875" x 5.875"	1.875"	500	32 lbs
1/2-SLAB-B&S	11.875" x 7.875"	1.875"	350	31 lbs
FUL-SLAB-B&S	15.875" x 11.875"	1.875"	250	45 lbs

Material: EP Coat 18 pts. cardboard.

We also have a wide range of products in different sizes to meet all your cake packaging needs.

"DISTINCTION" CAKE BOXES



Window with cellophane.

Item #	Dimension	Wall	Case	Weight
DIS-1415-1/4	14" x 10"	5"	75 sets	36 lbs
DIS-1915-1/2	19" x 14"	5"	50 sets	35 lbs
DIS-2615-FUL	26" x 18"	5"	25 sets	26 lbs

Material: CCNB 24 pts cardboard + corrugated base.

"DISTINCTION" CAKE BOARD

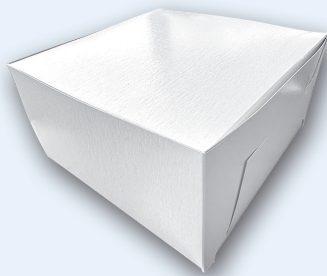


For "Distinction" cake boxes.

Item #	Dimension	Wall	Case	Weight
BOA-014B-1/4	13.75" x 9.75"	5"	150	18 lbs
BOA-019B-1/2	18.75" x 13.75"	5"	100	22 lbs
BOA-N26B-FUL	25.50" x 17.50"	5"	25	15 lbs

Material: Corrugated cardboard.

"HOOK-STYLE" CAKE BOXES



Item #	Dimension	Wall	Case	Weight
JJM-1010-5LK	10" x 10"	5"	100	35 lbs

Material: CCNB cardboard 24 pts.

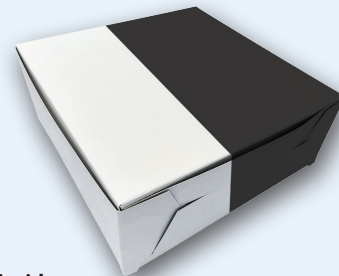
4-CORNER GLUED CAKE BOXES



Item #	Dimension	Wall	Case	Weight
INS-8306-CAK	8" x 8"	3.5"	250	38 lbs

Material: 18 pts CCNB cardboard.

"REVERSIBLE" CAKE BOXES



Black outside or inside.

Item #	Dimension	Wall	Case	Weight
JJM-5X5X-2.5	5" x 5"	2.5"	On request	On request
JJM-6X6X-3.5	6" X 6"	3.5"	On request	On request
JJM-7575-3.5	7.5" X 7.5"	3.5"	On request	On request
JJM-8X8X-005	8" X 8"	5"	On request	On request
JJM-9X9X-3.5	9" x 9"	3.5"	150	31.25 lbs
JJM-1010-3.5	10" X 10"	3.5"	On request	On request
JJM-1212-3.5	12" X 12"	3.5"	On request	On request
JJM-1212-005	12" X 12"	3.5"	On request	On request

Material: SBS 24 pts cardboard.

CARDBOARD STRIPS CAKE PROTECTORS

Ideal for protecting your cakes, our cardboard strips are made to your measurements and your choice of cardboard.



Our Christmas log boxes are made of high quality freezer cardboard with cellophane windows. With their silver colored patterns, they will give style to your logs. To facilitate handling, add a cardboard box for logs.

BOXES OF CHRISTMAS LOGS



Window with cellophane

Item #	Dimension	Case	Size/pkg	Weight
JJM-009N-LOG	9" x 6" x 6"	125	21.5" x 12.5" x 11.5"	37 lbs
JJM-012N-LOG	12" x 6" x 6"	125	21.5 x 17.25" x 6"	49 lbs
JJM-015N-LOG	15" x 6" x 6"	125	27.5" x 12.5" x 11.5"	50 lbs

Material: High-quality SBS 24 pts freezer carton with window and cellophane.
Printed in silver.
No minimum quantity.

CARDBOARD FOR BOXES OF CHRISTMAS LOGS



Item #	For log boxes	Dimension
CAR-TPAS-09N	9"	8.75" X 8.75"
CAR-TPAS-12N	12"	11.75" X 5.75"
CAR-TPAS-15N	15"	14.75" X 5.75"

Material: 24 pts cardboard CCNB

LACE DOILIES



Item #	Dimension	Qty
	4"	10000
	5"	10000
	6"	1000
	9"	5000
	10"	5000
	14"	2500
	16"	1000
	16"	2500
	18"	1000

Materials: Decorative papers with lace motifs.

Our lace doilies are perfect for weddings, birthdays, events, displaying edible treats or giving your table a professional look.

For many years, J.J. Marshall Inc. has specialized in the manufacture and printing of food packaging.

Ideal for transporting your products and creations, the printed cardboard box is a must-have for the food industry.

Its practicality is much appreciated by bakers and confectioners.

What's more, it's ideal for advertising by printing your logo, websites, slogans or simply your contact details.

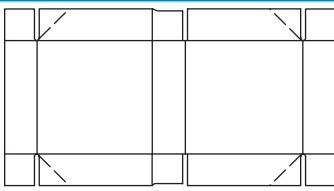
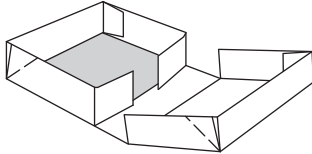
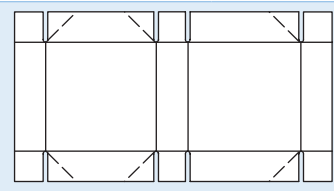
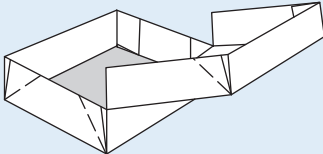
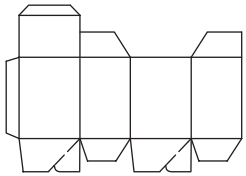
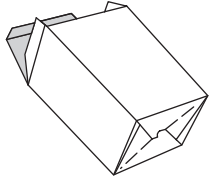
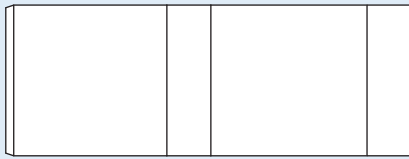
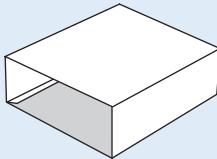
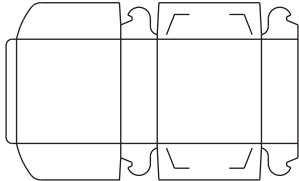
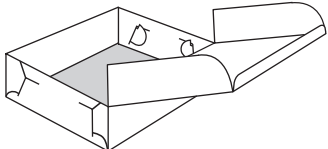
With our 40 inch, 6 colors + varnish press, we are able to deliver a product that will always be of the highest quality.

Whether your box is printed or not, and whatever style you want, we're sure to be able to produce a product that lives up to your expectations.

We also offer a wide range of products in different sizes, or custom-made to suit your packaging needs, on request.



OUR MOST POPULAR BOX TYPES

4 CORNERS GLUED BOX WITH CENTER OPENING		
6 CORNERS GLUED BOX		
AUTOMATIC BOTTOM BOX		
SLEEVE		
HOOK BOX		

Drawings are for guidance only.

Find out more about our compostable PLA lamination

PLA lamination, an eco friendly fully compostable alternative :

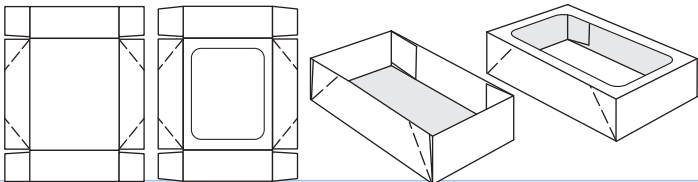
PLA lamination can be used to create a grease, odor and oil proof barrier, this is a great replacement for waxed cardboards and polystyrene which years after use.

Ask us about how you can switch to PLA laminate products and reduce your eco-footprint.

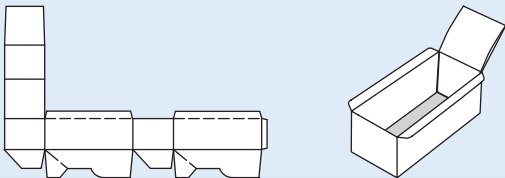


OUR MOST POPULAR BOXES (continued)

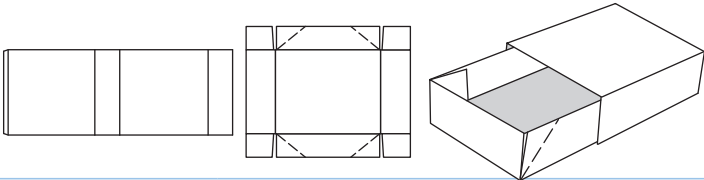
TOP / BOTTOM BOX



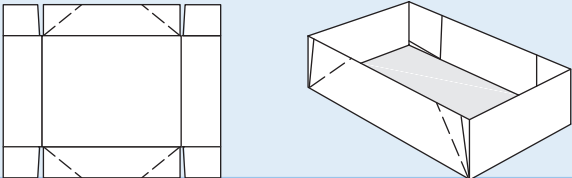
DISPLAY BOX



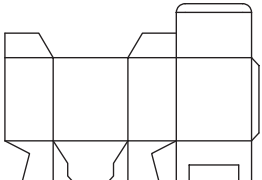
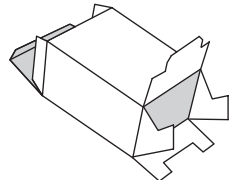
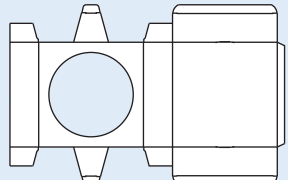
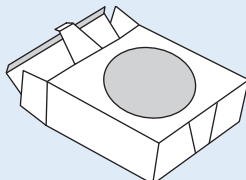
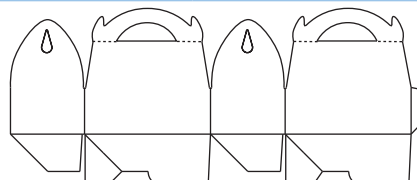

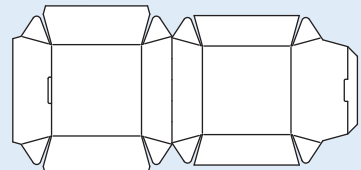
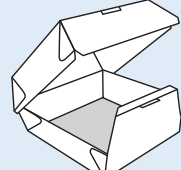
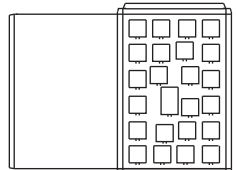
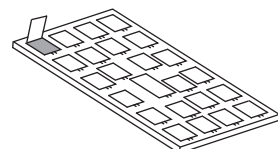
CABARET AND SLEEVE



CABARET



Drawings are for guidance only.

OUR MOST POPULAR BOXES (continued)		
SEMI-AUTOMATIC BOX		
PIE BOX (with strap-lock)		
HANDLE BOX		
BURGER BOX		
ADVENT CALENDAR		

Drawings are for guidance only.

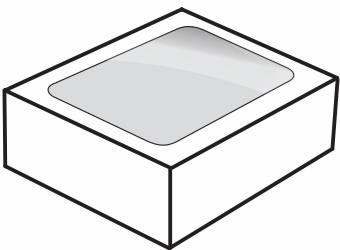


OUR MOST POPULAR BOXES (continued)	
REVERS TUCK BOX	
STRAIGHT TUCK BOX	
SEAL END BOX	
PILLOW BOX	
DOUBLE-WALL GLUED BOX (UNGLUED MODEL AVAILABLE)	

Drawings are for guidance only.



*Most of our boxes can be fitted with
a window on request.
(Choice of cellophane, polyester or acetate)*



Some of our achievements



Some of our achievements





Contact us for more information!



9780 Waverly, Montreal, Qc H3L 2V5



514.381.5647



sales@jjmarshall.com



www.jjmarshall.com